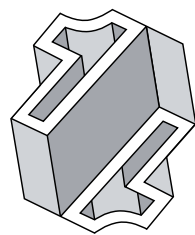




# Standard Tariff of Charges

*Effective as from 1st October 2009*



**FIMBANK**

**Documentary Credits**

We handle documentary credits in accordance with the "Uniform Customs and Practice for Documentary Credits" as issued by the International Chamber of Commerce, Paris and applicable at the time.

Our rates and prices include usual postage, but not communication expenses and courier costs. Third party bank expenses which we incur will also be charged to the customer at cost.

**Outward Letters of Credit**

Issuing / Opening an L/C	0.125% per month or part thereof min. USD250 and calculated from issuance to expiry date or latest maturity date whichever the later (payable on application and non-refundable)
Issuing an amendment to an L/C	USD200 flat If amount is increased or expiry extended 0.125% per month or part thereof min. USD200 (payable on application and non-refundable)
Payment/Negotiation fee	0.25% min. USD250
Cancellation or Unutilisation fee (applicable to both unutilised expired and unutilised cancelled credits)	USD100 flat (over and above issuing / opening & amendment fee)

**Inward Letters of Credit**

Advising an L/C	USD250 flat
Advising an amendment	USD200 flat per amendment advised
Payment/Negotiation fee	0.25% min. USD250
Acceptance/Deferred payment	Negotiable on a case by case basis
L/C Confirmation	Negotiable on a case by case basis but in any case not less than USD250
Advising of a third bank's letter of credit to a correspondent bank	USD250 flat
Advising of a third bank's amendment to a letter of credit to a correspondent bank fee.	USD200 flat

**Transferable Letters of Credit**

Transfer of a letter of credit	0.3% min. USD250
Transfer of an amendment	USD200 flat If amount is increased 0.3% or USD100 whichever the greater
L/C Confirmation	Negotiable on a case by case basis but in any case not less than USD250
Cancellation or Unutilisation fee (applicable to both unutilised expired and unutilised cancelled credits)	USD100 flat (over and above all other fees)

**Back to Back Letters of Credit**

Issuing a Back to Back L/C (FIMBank confirming bank of Primary Credit on an explicit or "silent" basis)	1% flat (excluding amendment and communication expenses) min. USD1,500
Issuing an amendment to a Back to Back L/C	USD200 flat If amount is increased or expiry extended 1% on value of increase min. USD200
Cancellation or Un-utilisation fee (applicable to both unutilised expired and unutilised cancelled credits)	USD300 flat (over and above issuing / opening & amendment fee)

**Outward Standby Letter of Credit / Demand Guarantees**

Issue a Standby L/C or Demand Guarantee (other than cash covered)	Negotiable on a case by case basis but in any case not less than USD250
Issue of cash secured Standby L/C or Demand Guarantee	0.125% per annum min. USD250
Amendment to a Standby L/C or Demand Guarantee	USD200 flat If amount is increased or expiry extended in line with issuance fee but in any case not less than USD200
Payment/Negotiation fee	0.25% min. USD250

**Inward Standby Letter of Credit / Demand Guarantees**

Advising Standby L/C or Demand Guarantee	USD250 flat
Advising an amendment	USD200 flat per amendment advised
Payment/Negotiation fee	0.25% min. USD250

**Letter of Assignment**

Notification/Acknowledgement of Letter of Assignment	0.125% min. USD250
Payments under letter of assignment	As per standard payment tariff

**Other Charges**

Checking of documents prior to presentation	USD50 per set of documents which are to be submitted once in one full set
Discrepant documents presented under letter of credit	USD200 over and above all standard tariff charges
Irrevocable Reimbursement Undertaking	Negotiable on a case by case basis but in any case not less than USD250 plus settlement of reimbursement claim fee
Settlement of reimbursement claim	USD150 flat per settlement
Shipping Guarantee/Indemnity	If issued under letter of credit USD100 per month or part thereof else 0.125% per month of invoice value of goods or part thereof min. USD250 (payable on application and non-refundable)

**Letter of Credit Expenses**

Courier fees	DHL USD100 / Aramex USD56
Communication	USD200 for transmission by SWIFT of: Letter of Credit, Standby Letter of Credit, Transfer of a L/C, Guarantee, third bank's L/C. This covers the transmission of all amendments and correspondence, except for situations which require special handling or extensive correspondence

**Documentary Collections**

We handle documentary clean and documentary collections in accordance with the "Uniform Rules for Collections" as issued by the International Chamber of Commerce, Paris and applicable at the time. Our rates and prices include usual postage, but not communication expenses and courier costs. Third party bank expenses which we incur, these will also be charged at cost.

**Inward Collection (Import)**

Collection fee	0.125% min. USD150 max. USD500
Overdue collection	USD50 per 30 days overdue
Avalisation of a Bill of Exchange	Negotiable on a case by case basis but in any case not less than USD250 payable in advance

**Outward Collection (Export)**

Collection fee	0.125% min. USD150 max. USD500
Tracers	USD25
Discount Interest	Negotiable on a case by case basis

**Collection Expenses**

Courier fees	DHL USD100 / Aramex USD56
Communication	USD25 This covers the transmission of all correspondence, bar situations which require special handling or extensive correspondence

**Payments**

Single Euro Payments Area (SEPA) payments

A valid SEPA transfer should conform to the following criteria:

- Payment must be in EURO currency,
- Originating from one of 27 European member states, EEA Member States (Iceland, Norway, Liechtenstein), Switzerland, Martinique, Guadeloupe, French Guiana, Reunion, Gibraltar, Azores, Madeira, Canary Islands, Ceuta and Melilla and Aland Islands
- Charges are to be shared (SHA). In accordance with EEC Payment Services Directive payments directed to a beneficiary within the EEC are not to have an OUR charges code
- Both the a/c number of the Applicant and the Beneficiary must be IBAN (International Bank Account Number)

All EUR payments will be processed as SEPA payments unless otherwise instructed by the Remitter

***Inward Payments***

Payment fee	USD10 flat
Correspondent bank fee (Applicable to all USD and EUR payments) over and above payment fee	USD10
Inward Payments with charges to Remitter (OUR)	USD30 claimed from remitting bank

***Outward Payments***

Payment fee	0.1% min. USD10 max. USD100
Correspondent bank fee applicable to USD and non-SEPA compliant EUR payments over and above payment fee	USD10
Foreign bank fees for outward payments with charges for remitter (OUR)	USD35 additional to the payment and correspondent bank fee
Same day value payments	USD25 additional to all other applicable fees for amounts less/equal to USD100,000 USD50 additional to all other applicable fees for amounts greater than USD100,000
Next day value payments	USD15 additional to all other applicable fees
Tracers or enquiry messages	USD15 per message plus all foreign bank fees and out of pocket expenses
Amendment or cancellation of payment	USD25 plus all foreign bank fees and out of pocket expenses

***Issue of Drafts***

Draft in USD & GBP drawn on foreign correspondent	USD50 flat
Draft in USD & GBP drawn on local correspondent	USD5 flat
Draft in EUR	USD5 flat
Stop Payment fee	USD25 for drafts drawn on foreign correspondents USD5 for drafts drawn on local correspondents
Cancellation fee	USD25 for drafts drawn on foreign correspondents USD5 for drafts drawn on local correspondents

***Deposit of Cheques/Drafts to an Account with FIMBank***

Local cheques	USD10
Foreign cheques	USD10 flat plus foreign bank fee if applicable
Cheque sent for collection to payee bank	0.125% min. USD150 max. USD500
Cheque returned unpaid	USD20

### Escrow Accounts

All fees are payable prior to rendering the service. FIMBank shall have the right to modify the fee (which may exceed the above rates) in case of tailor-made agreements or other ad hoc transactions.

Account opening, maintenance and preparation of the agreement	0.4% of the amount, min. USD500, max. USD2,000
Amendments to the Escrow Account Agreement	0.1% of the amount, min. USD200, max. USD1,000
Internal transfers <ul style="list-style-type: none"> <li>From the Escrow Account to any account held with FIMBank</li> <li>From the Escrow Account to all accounts with any other financial institution</li> </ul>	Free of charge  As per tariff (0.1% min. USD10 max. USD100) + other fees (if applicable)
Statement on the Escrow Account	USD100 per statement

### Other Fees

Legal Fees	Recoverable at cost
Reference letter or Status report	USD25 flat if transmitted by one of fax/email/post. SWIFT/Courier costs extra
Release of Stock	USD150 flat if transmitted by one of fax/email/post
Forward Exchange Contract	Forward exchange rates will be quoted on application
Special Handling Fee	This fee is at our discretion We will apply it where letter of credit or collection transactions require special handling and / or extensive correspondence

### Account Fees

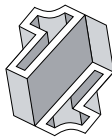
Account Minimum Balance Fee	Free of charge subject to an average balance of USD2,500 (or equivalent) during a month. USD100 (or equivalent) per month and customer account is charged if the accounts are below this average balance
Account Maintenance Fee	USD100 per annum
Inactive Account Maintenance Fee	Free of charge – subject to regular activity. USD100 per annum after 360 days inactivity
Term Deposits	No maintenance fee for term deposit or related call or current account
Special charges scheme for funds transfers relating to Term Deposits	<b>Inward Payment/Drafts</b> for placement to a term deposit - No charge  <b>Outward Payments</b> in settlement of term deposits EUR SEPA compliant EUR10 flat USD spot payment USD15 flat GBP spot payment GBP15 flat

*Account Fees - cont'd*

	<b>Drafts</b> issued in settlement of term deposits: Drafts drawn on local banks in EUR, GBP & USD no charge Drafts issued on foreign correspondents USD50 flat
Mail retention agreement	USD50 flat charged on an annual basis in advance
FAX test key arrangement	USD50 flat charged on an annual basis in advance
Statement request	USD10 flat if transmitted by one of fax/email/post Courier costs extra
Audit report	USD75 flat if transmitted by one of fax/email/post Courier costs extra
Cash deposits and withdrawals of all currencies except EURO	0.625% min. USD5
Company In Formation Accounts (CIFA)	USD100 and charged when capital is moved to operating account

*Important Information*

This Standard Tariff of Charges is effective as from 1st October 2009 and supersedes all previous tariffs of charges or pricing arrangements. FIMBank reserves the right to change or amend the Standard Tariff of Charges at any time without prior notice. This Standard Tariff of Charges applies to standard transactions. Higher and/or additional charges may apply to certain transactions including complex transactions, transactions that are required to be processed urgently and transactions that involve products and arrangements that are not referred to in this Tariff. Customers can ascertain the fees that may apply by contacting FIMBank's Corporate and Institutional Banking Division [cib@fimbank.com](mailto:cib@fimbank.com).



**FIMBANK**

**FIMBank plc**  
**7th Floor, The Plaza Commercial Centre**  
**Bisazza Street, Sliema SLM 1640 Malta**  
**Tel: +356 21 322 100 Fax: +356 21 322 122**  
**E-mail: [info@fimbank.com](mailto:info@fimbank.com)**

[www.fimbank.com](http://www.fimbank.com)